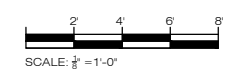


1 ELEVATION- SOUTH WEST
1/8" = 1'-0"



2 ELEVATION- NORTH EAST
1/8" = 1'-0"



NEW
 EXISTING TO REMAIN

RICH MARKUS ARCHITECTS
 2601 P STREET NW 2ND FL
 WASHINGTON DC 20007
 202.333.2733
 www.richmarkusarchitects.com

1151 Oates St NE
 Washington, DC 20002

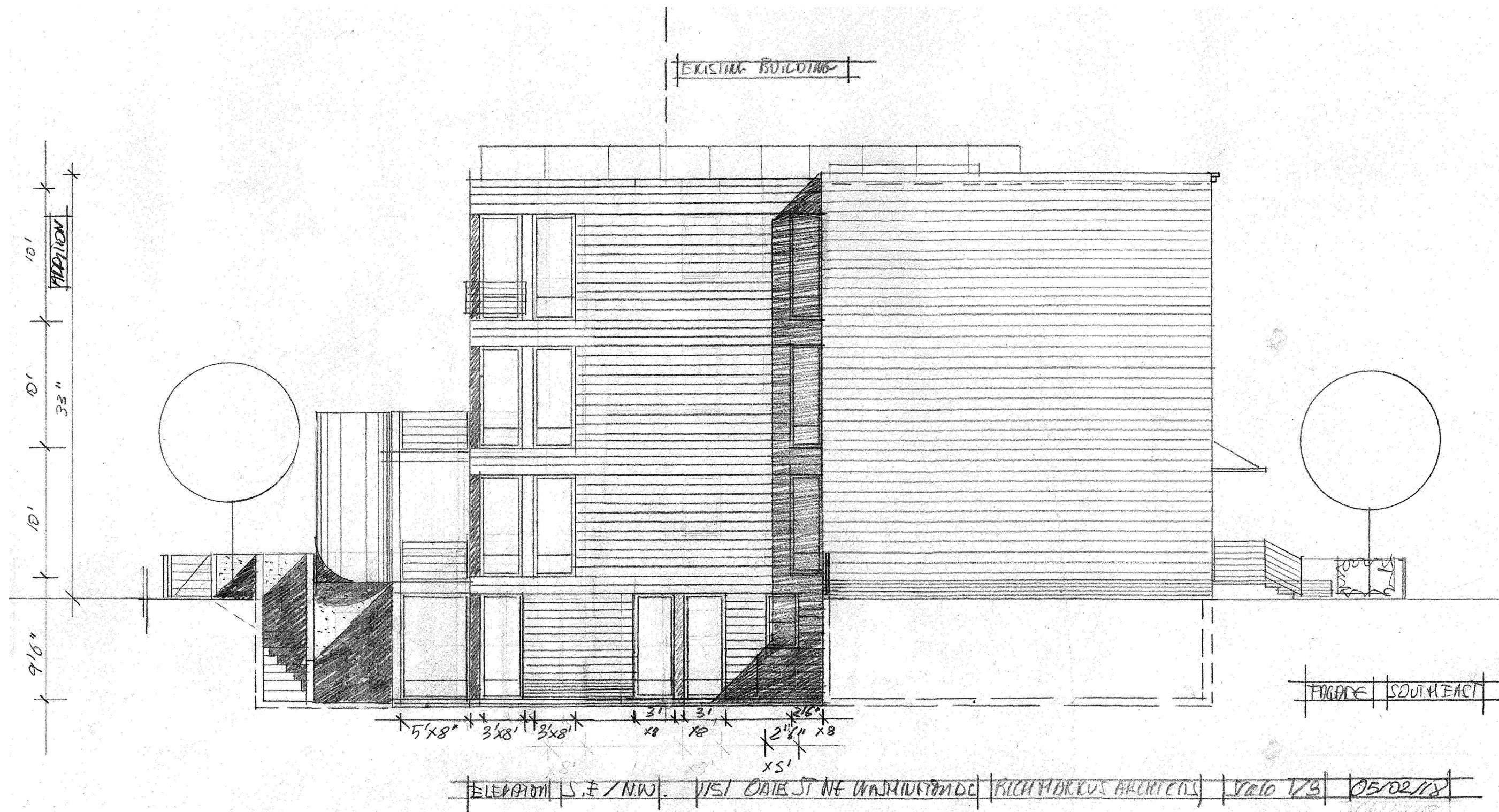
PROPOSED
 ELEVATIONS

NO.	REVISIONS

1/8" = 1'-0" SCALE

05-04-2018 ISSUE

A301
 DRAWING NUMBER

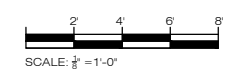


EXISTING BUILDING

FIGURE SOUTH EAST

ELEVATION S.E./N.W. 1151 OATES ST NE WASHINGTON DC RICH MARKUS ARCHITECTS Volo 1/3 05/02/18

1 ELEVATION- SOUTH EAST
1/8" = 1'-0"



NEW
EXISTING TO REMAIN

RICH MARKUS ARCHITECTS
2601 P STREET NW 2ND FL
WASHINGTON DC 20007
202.333.2733
www.richmarkusarchitects.com

1151 Oates St NE
Washington, DC 20002

PROPOSED
ELEVATIONS

NO.	REVISIONS

1/8" = 1'-0" SCALE

05-04-2018 ISSUE

A302
DRAWING NUMBER

